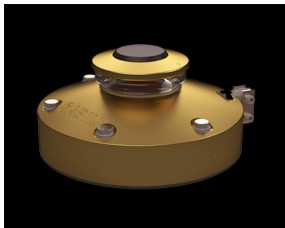
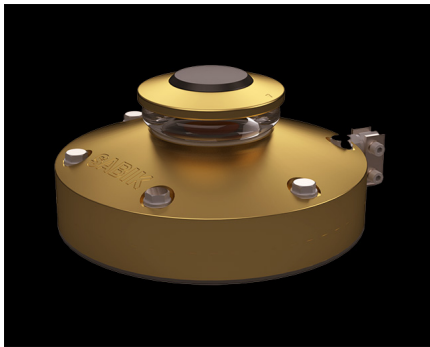


### MPV II



The MPV II is the toughest ice buoy lantern ever produced, boasting a robust bronze alloy body and a thick molded polycarbonate lens that can withstand the crushing pressures of ice and prolonged submersion. It serves as a modern replacement for the renowned MPV LED, with completely re-designed optics. The MPV II's reduced power consumption doubles the battery replacement cycle, while its tricolor functionality minimizes required stock by half. Maintenance and monitoring are enhanced with Bluetooth control and new remote monitoring technology, as well as remarkably improved lantern positioning accuracy.

[Contact Us](#) [Get a quote](#)

Rating: Not Rated Yet

[Ask a question about this product](#)

Description

#### [Features](#)

##### **Sabik MPV II Ice Buoy Lantern features:**

- Strong bronze alloy housing
- Fully waterproof and can tolerate long-term submersion of up to 100 meters
- Drop in replacement for MPV LED, taking advantage of the identical lower flange
- Exceptionally low power consumption enabling a battery replacement cycle of over 3 years
- Visual range up to 8 NM ( $T_c = 0,74$ )
- Bluetooth configuration
- Tricolor functionality, white/red/green or yellow/ red/green in one lantern
- Long-range LTE-M remote monitoring technology
- GNSS position monitoring, accuracy of 2,5m CEP
- Event log and calendar functionality
- Satellite synchronization with an adjustable delay

## [Downloads](#)

### **Downloads**

[Product Datasheet MVP II \(pdf eng\)](#)

## [References](#)

### **References**

Read more:

[MPV II blog post](#)

Sabik LED:

[Read more download \(pdf\)](#)

## [Extranet login](#)

### **Extranet login**